

How to Install WuRittSolva1.0

By Liu Hua-Shan

HomePage : <http://magicm.51.net>, E-Mail : liukaitianpidi@sina.com

Dept. of Maths, School of Science, Tianjin Polytechnic University, 300160

CopyRight © 2005

June 21st 2005

This document shall instruct you to install WuRittSolva1.0 step by step, for more details on WuRittSolva and WuRitt characteristic set method you may read WuRittSolva User Manual after successful installation.

WuRittSolva is a standard application package independent with other application packages of *Mathematica* computer algebra system developing environment. Generally, those standard packages companionship with *Mathematica* latest releases can be called by command `Need[""]` in notebook so as to use functions in these packages. However, *Mathematica* support loading these packages automatically when *Mathematica* initializes if these packages are in AutoLoad in directory Add-Ons. In the sake of using WuRittSolva conveniently, the WuRittSolva setup wizard shall instruct you installing the package in AutoLoad directory briefly. Figure 1 show the application interface of WuRittSolva.

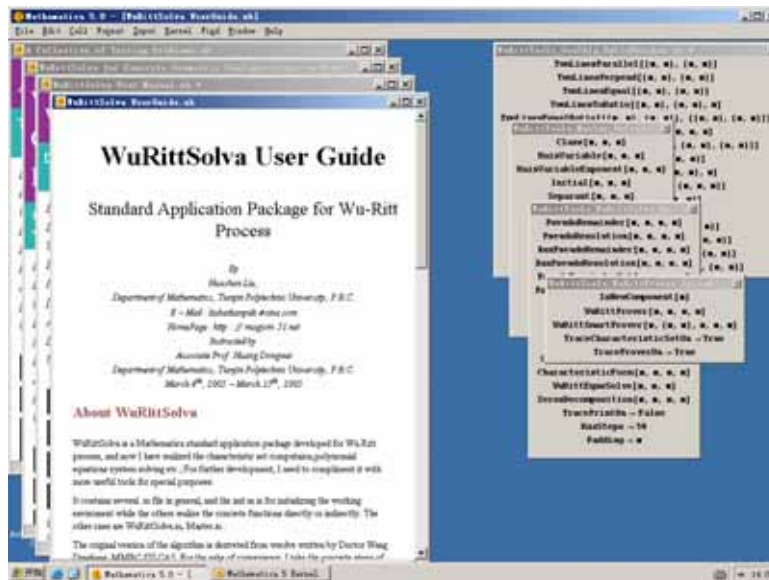


Figure 1 WuRittSolva application interface

Section HIW_I. Installing WuRittSolva1.0 Step by Step

This Setup Wizard is created using Inno Setup 2 which has been released by Jordan Russell for free. See <http://www.jrsoftware.org>.

Declaration: When referring WuRittSolva, any person or organization should commenting **CopyRight © 2005 Liu Hua-Shan** any way.

Step1. Double Click the Setup.EXE  in initial directory, When the hinting dialog appears, click [Yes]. See figure 2.

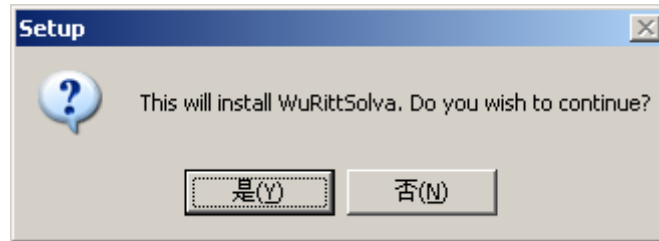


Figure 2 Hinting dialog

Step2. In the welcome dialog, click [NEXT] if you want to continue the installation. The left side gives short information for WuRittSolva1.0, including the author's contact infors.. See Figure 3.



Figure 3 Welcome dialog

Step 3. In license dialog, click [YES] to continue the installation. See Figure 4.

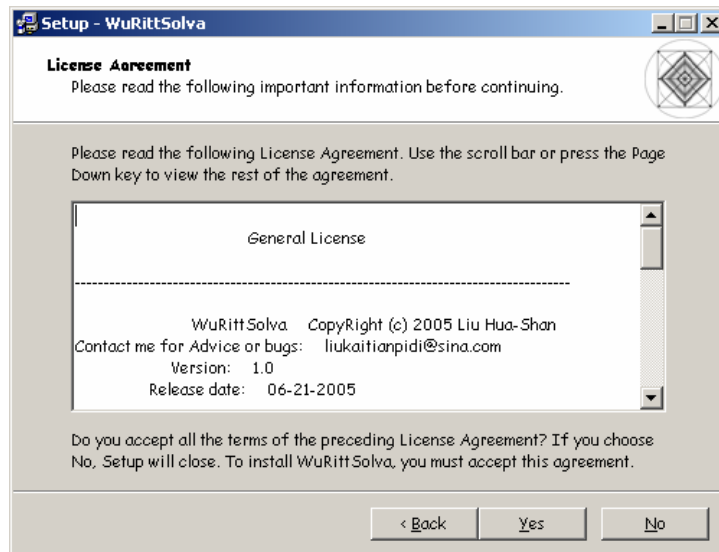


Figure 4 License dialog

Step 4. In information dialog, click [NEXT] to continue the installation. See Figure 5.

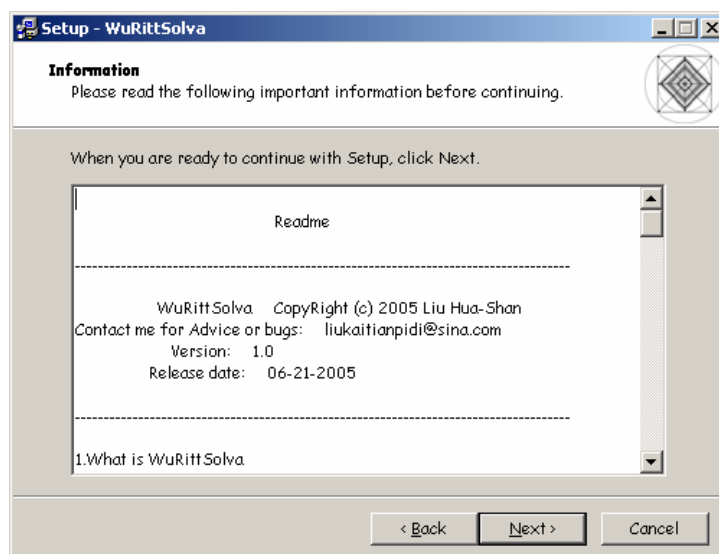


Figure 5 Information dialog

Step 4. In select destination directory dialog, please make sure that you select *Autoload* directory in *Mathematica* installation directory, and then click [NEXT] to continue the installation. See Figure 6. The default installation directory is “c:\Program Files\Wolfram Research\Mathematica\5.0\AddOns\Autoload”

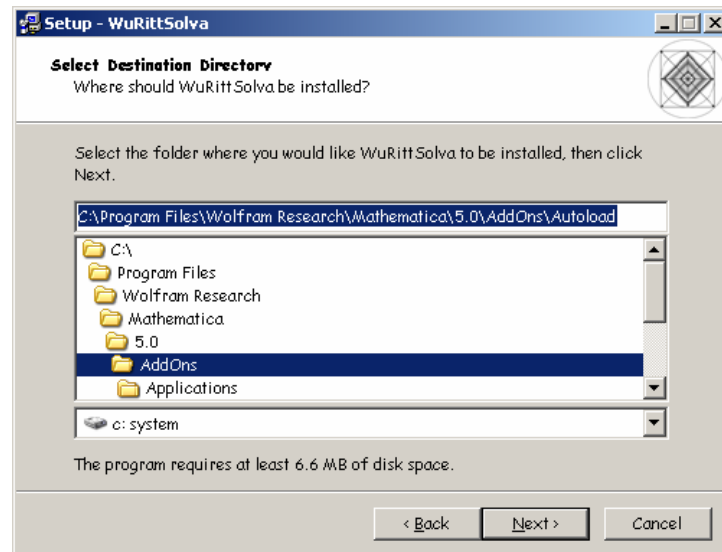


Figure 6 select destination directory

Step 6. In select start menu dialog, you can specify the installation folder name and position for WuRittSolva or click the “don't create a start menu folder**”, then click [NEXT] to continue the installation. See Figure 7.**

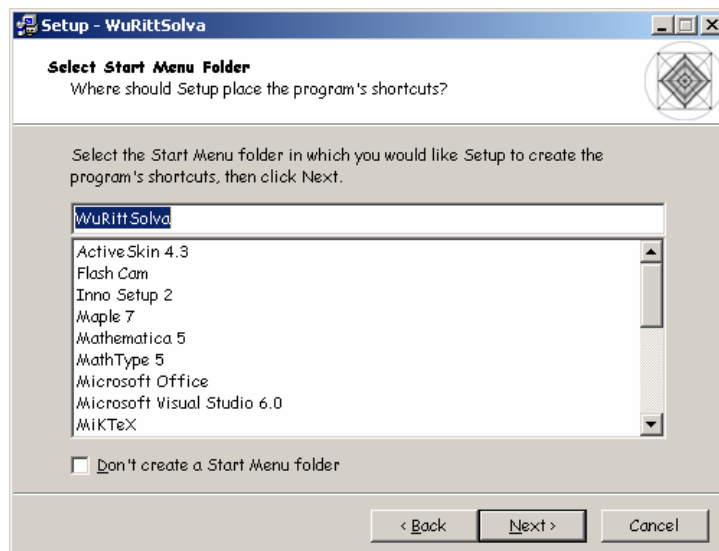


Figure 7 Select start menu

Step 7. In select additional tasks dialog, you can select whether create shortcuts for WuRittSolva User Manual, then click [NEXT] to continue the installation. See Figure 8.

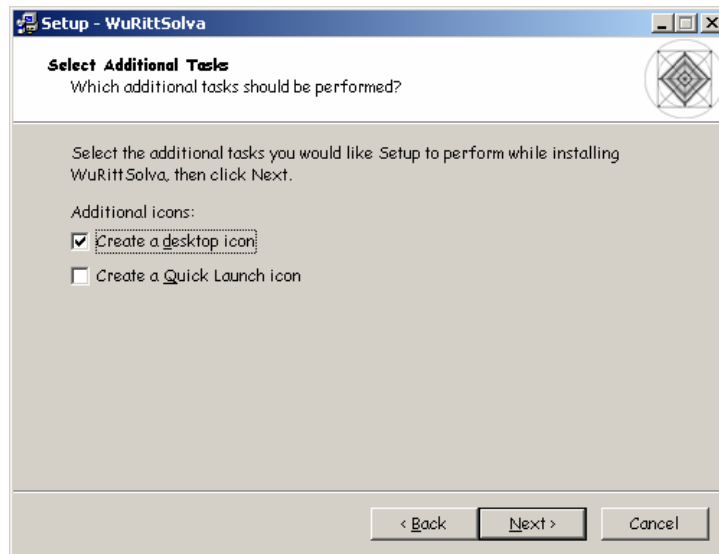


Figure 8 Select additional tasks

Step 8. In ready to install dialog, Click [Install] to continue the installation. See Figure 8.

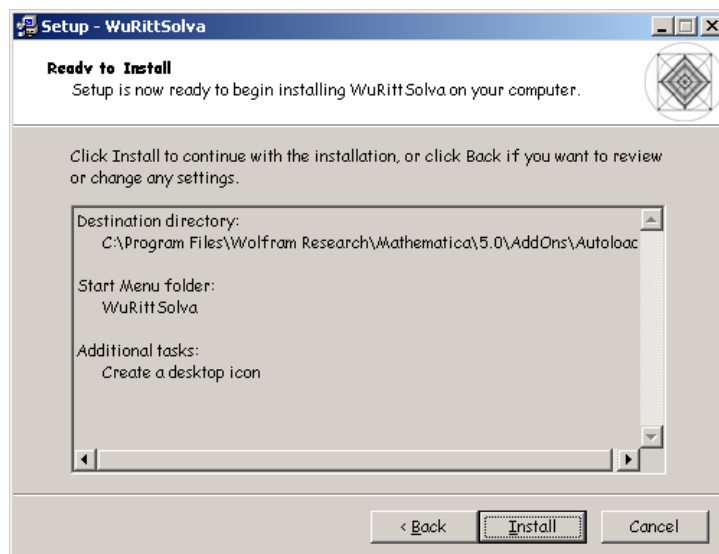


Figure 9 Ready to install

Step 9. In installing dialog, click [Next] to continue the installation and the installation program shall complete the installation automatically. See Figure 10.

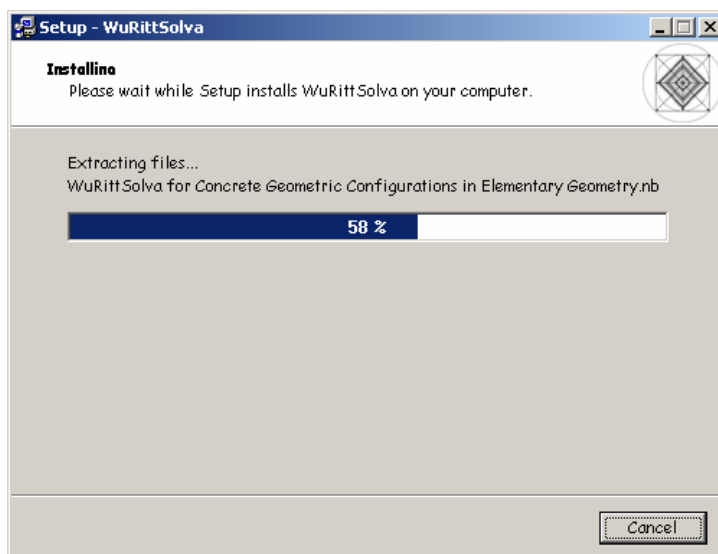


Figure 10 Installing

Step 10. After installing program files, you can read whatisnew in information dialog, then click [Next] to continue the installation. See Figure 11.

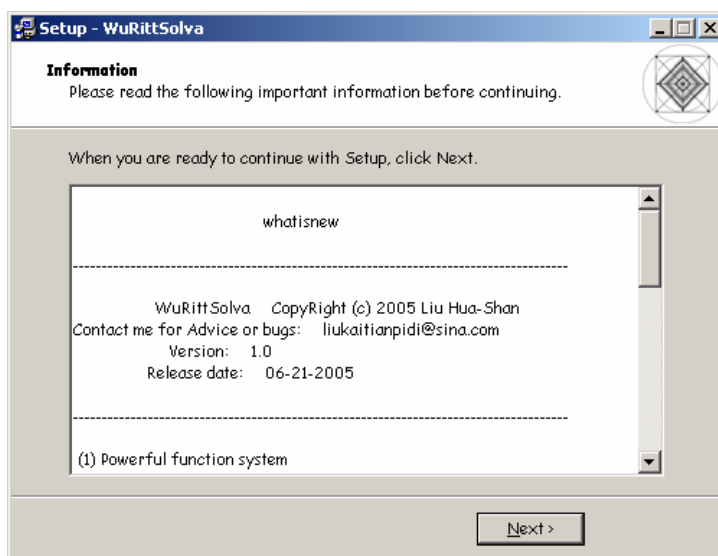


Figure 2 Information

Step 11. Now this is last step of the installation. Click [Finish] to end the installation. See Figure 12. Besides, you can select whether to view relevant documents or not, i.e. when you select “View WuRittSolva User Manual” before ending the dialog,

you'll see the user manual right now. See Figure 13.

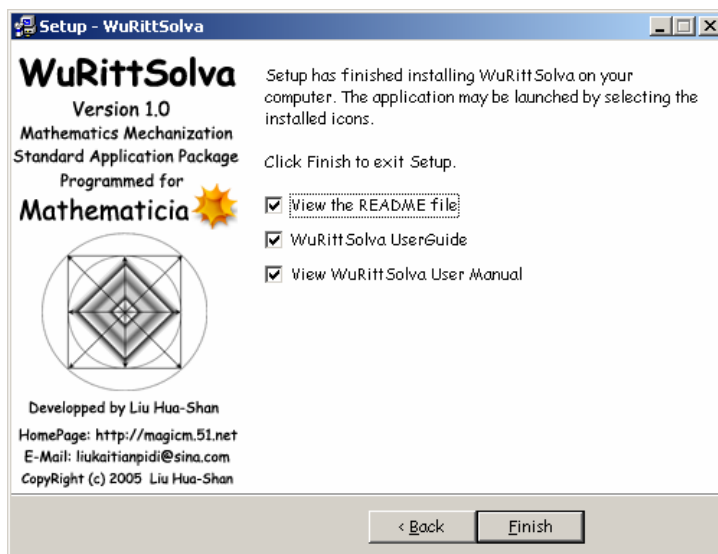


Figure 3 Complete the installation



Figure 4 WuRittSolva User Manual

When you want to modify the installing selection, you can click [Back] and deal with it in each step above.

Section HIW_II. Relevant Operations After Installation

WuRittSolva1.0 supplies a lot of documents for studies and testing. you can read them through the *Mathematica* Help Browser. Before this you must rebuild the help index using commands “**Rebuild Help Index**” in *Mathematica* [Help] menu. See figure 14 and 15.

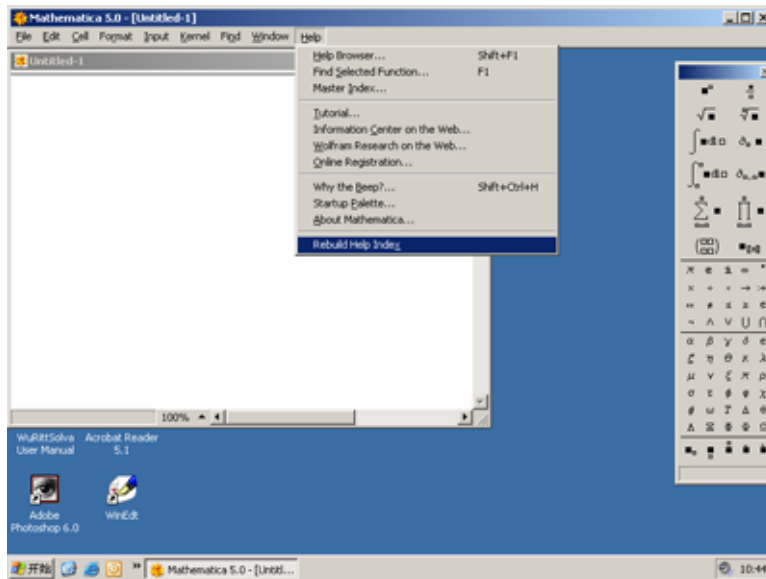


Figure 5 Rebuild help index

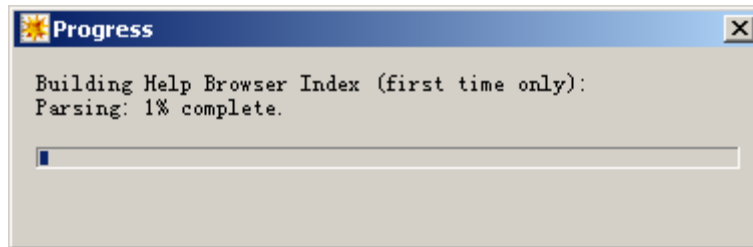


Figure 6 Progress of rebuilding help index

After rebuilding the help, you may read these WuRittSolva help documents in the “**Add-Ons & links**” in the Help Browser. See figure 16.

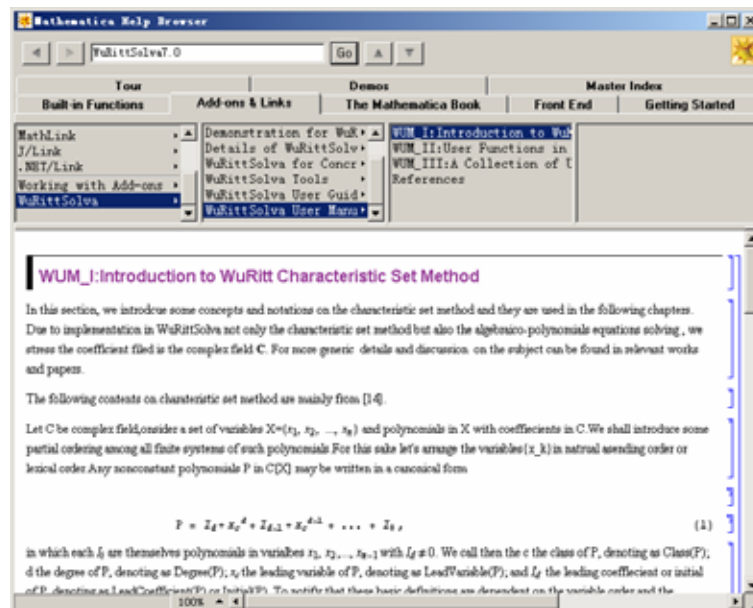


Figure 7 Documents in Help browser

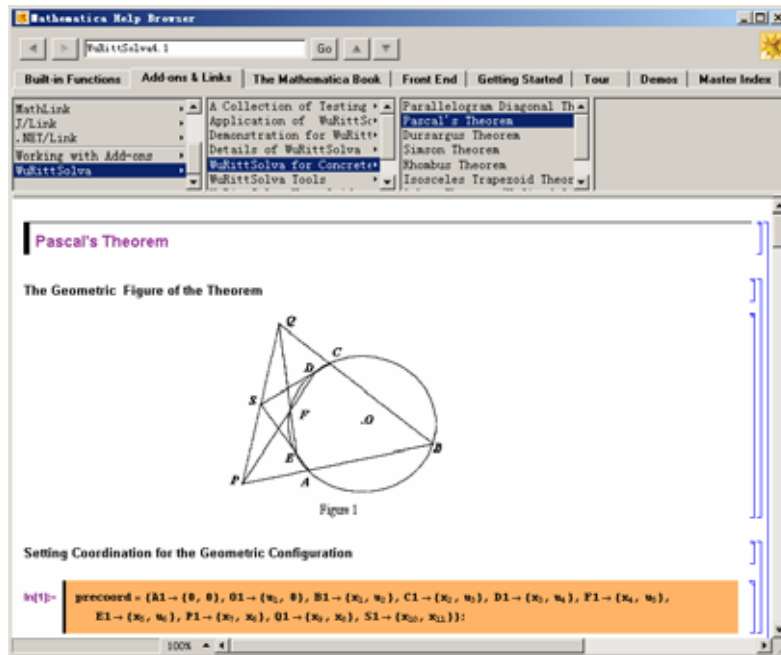


Figure 8 Pascal's theorem in help browser

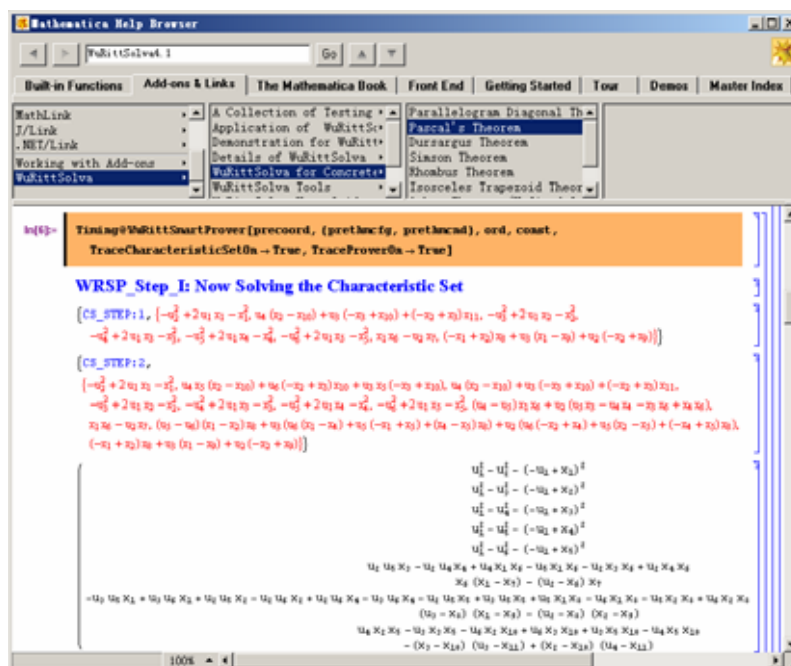


Figure 9 Pascal's theorem in help browser

If you want uninstall WuRittSolva1.0, you can run the uninstall program in the start men or from the “Add/Delete” control panel. It’s easy to remove WuRittSolva1.0 from you computer if you do not want to use it.

If you encounter any problem appearing in installation or when using WuRittSolva, you may contact me by e-mial: liukaitianpidi@sina.com, I am pleased to fix it as soon as possible.

Enjoying WuRittSolva, enjoying *Mathematica*!